

# Vinyl Decal Application Instructions

Please Read these instructions before applying your decal

## Surface Prep

We recommend cleaning with isopropyl alcohol. Saturate a clean cloth and wipe the surface. Then dry with a clean, dry, lint-free cloth. Climate air and application surface temperature must be above 50°F for successful application. If the surface to which you are applying is colder than 50°F, use a hair dryer to warm it up.

## Decal Application

**Step 1** Align the decal on the desired surface and tape to the surface with masking tape across the top, creating a hinge. Rub the top of the transfer tape(decal).

**Step 2** Flip the graphic up and pull paper backing off, exposing the adhesive.

**Step 3** Hold graphic tautly by the corners and flip back down so that the adhesive is against the surface. Once the decal touches the surface, it cannot be moved again! **PLEASE DO NOT GET IN A HURRAY!**

**Step 4** With firm pressure (use driver license or credit card), rub graphic area from the center out to the edges forcing all air out. Any air bubbles will disappear.

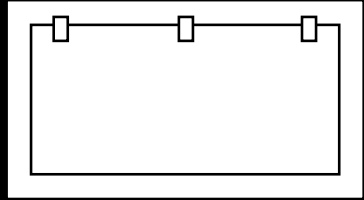
**Step 5** Wait a few minutes, then remove the application tape by pulling it back on itself, leaving the graphic on the surface. If the graphic comes off with the trasfer tape, repeat step 4 and then try removing the application tape again.

**Step 6** Take your fingers and check all the edges and make sure they are tight. If you have an air bubble, use a pin and poke a small pin hole, allowing air to escape, and press spot with fingers. the bubbles may disappear after a day or two in the sun.

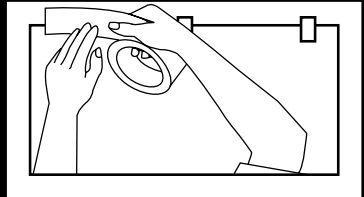
## Removal Instructions:

Decals can be removed from glass with a razor blade. To remove lettering from any other surface, apply heat from a low power heat gun or hair dryer. The adhesive will be weakened and the letters will peel off. If the surface is not compatible with heat, peel letters by hand and remove adhesive residue with a commercially available glue remover.

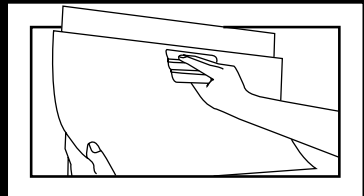
If you have any questions or concerns, or would like to order additional decals, please call or email me. CK Signs & Apparel 614-634-6188 [cksigns@columbus.rr.com](mailto:cksigns@columbus.rr.com)



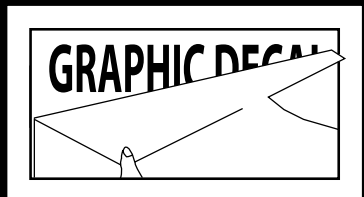
Use 1" - 2" (2.5-5cm) strips of masking tape to position decal in proper registry.



Apply horizontal tape hinge at the top of the decal.



Remove liner entirely and allow decal to drape. Using firm initial pressure, begin at top center and work down and outward to each edge of mask.



Remove premask at 180 angle. (pull back on itself)